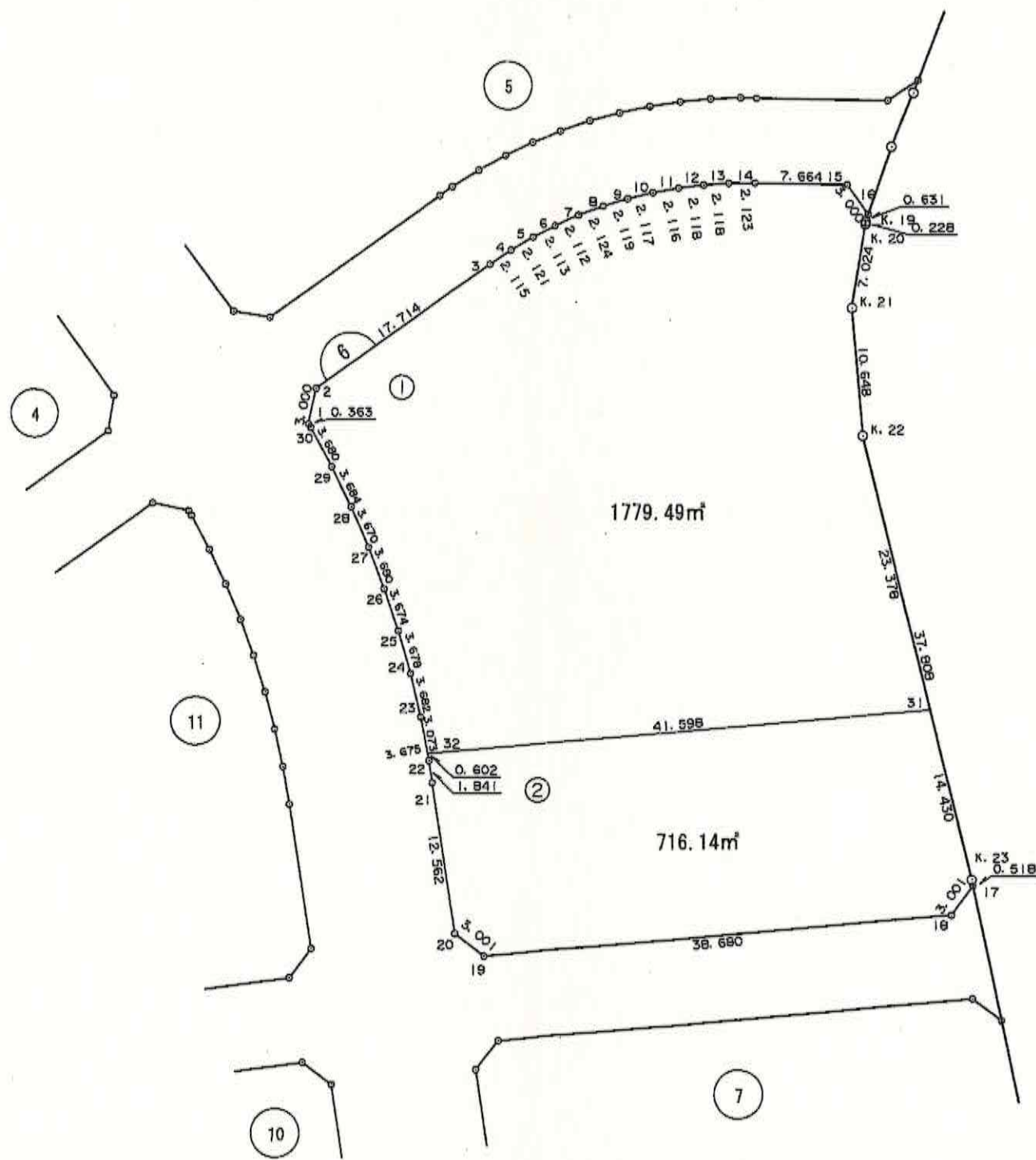
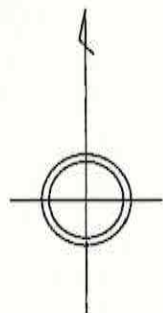


街区番号	6BL
街区面積	2495.64
画地面積	2495.63

平成十九年三月作成



S=1:500

(世界測地系)

東久留米市

画地面積計算簿

地番	6BL-1						
測点	X	Y	DX	Y × DX	内角	方向角	辺長
6.1	-26471.987	-26840.058					
6.2	-26469.052	-26839.433	13.201	-354307.355033	222-33-45	12-01-17	3.000
6.3	-26458.786	-26824.996	11.442	-306931.604232	181-39-03	54-35-02	17.714
6.4	-26457.610	-26823.237	2.250	-60352.283250	183-20-37	56-14-05	2.115
6.5	-26456.536	-26821.408	2.035	-54581.565280	183-22-18	59-34-42	2.121
6.6	-26455.575	-26819.526	1.812	-48596.981112	183-17-58	62-57-00	2.113
6.7	-26454.724	-26817.592	1.596	-42800.876832	183-13-34	66-14-58	2.112
6.8	-26453.979	-26815.602	1.368	-36683.743536	183-25-54	69-28-32	2.124
6.9	-26453.356	-26813.576	1.128	-30245.713728	183-17-34	72-54-26	2.119
6.10	-26452.851	-26811.520	0.889	-23835.441280	183-20-42	76-12-00	2.117
6.11	-26452.467	-26809.439	0.646	-17318.897594	183-21-00	79-32-42	2.116
6.12	-26452.205	-26807.337	0.401	-10749.742137	183-20-35	82-53-42	2.118
6.13	-26452.066	-26805.223	0.158	-4235.225234	183-14-57	86-14-17	2.118
6.14	-26452.047	-26803.100	-0.136	3645.221600	181-40-18	89-29-14	2.123
6.15	-26452.202	-26795.437	-2.612	69989.681444	233-48-02	91-09-32	7.664
6.16	-26454.659	-26793.714	-3.054	81828.002556	234-04-41	144-57-34	3.000
K.19	-26455.256	-26793.920	-0.822	22024.602240	170-18-03	199-02-15	0.631
K.20	-26455.481	-26793.957	-7.159	191817.938163	179-52-09	189-20-18	0.228
K.21	-26462.415	-26795.081	-17.548	470200.081388	166-09-56	189-12-27	7.024
K.22	-26473.029	-26794.222	-33.349	893560.509478	171-09-04	175-22-23	10.648
6.31	-26495.764	-26788.774	-26.289	704250.079686	278-34-29	166-31-27	23.378
6.32	-26499.318	-26830.220	-0.536	14380.997920	264-02-27	265-05-56	41.598
6.23	-26496.300	-26830.799	6.601	-177110.104199	177-31-47	349-08-23	3.073
6.24	-26492.717	-26831.648	7.122	-191094.997056	177-30-26	346-40-10	3.682
6.25	-26489.178	-26832.651	7.027	-188553.038577	177-29-13	344-10-36	3.678
6.26	-26485.690	-26833.807	6.931	-185985.116317	177-38-11	341-39-49	3.674
6.27	-26482.247	-26835.108	6.818	-182961.766344	177-32-10	339-18-00	3.680
6.28	-26478.872	-26836.552	6.698	-179751.225296	177-33-56	336-50-10	3.670
6.29	-26475.549	-26838.144	6.571	-176353.444224	177-32-36	334-24-06	3.684
合 計			倍面積				
			面積		坪数		

